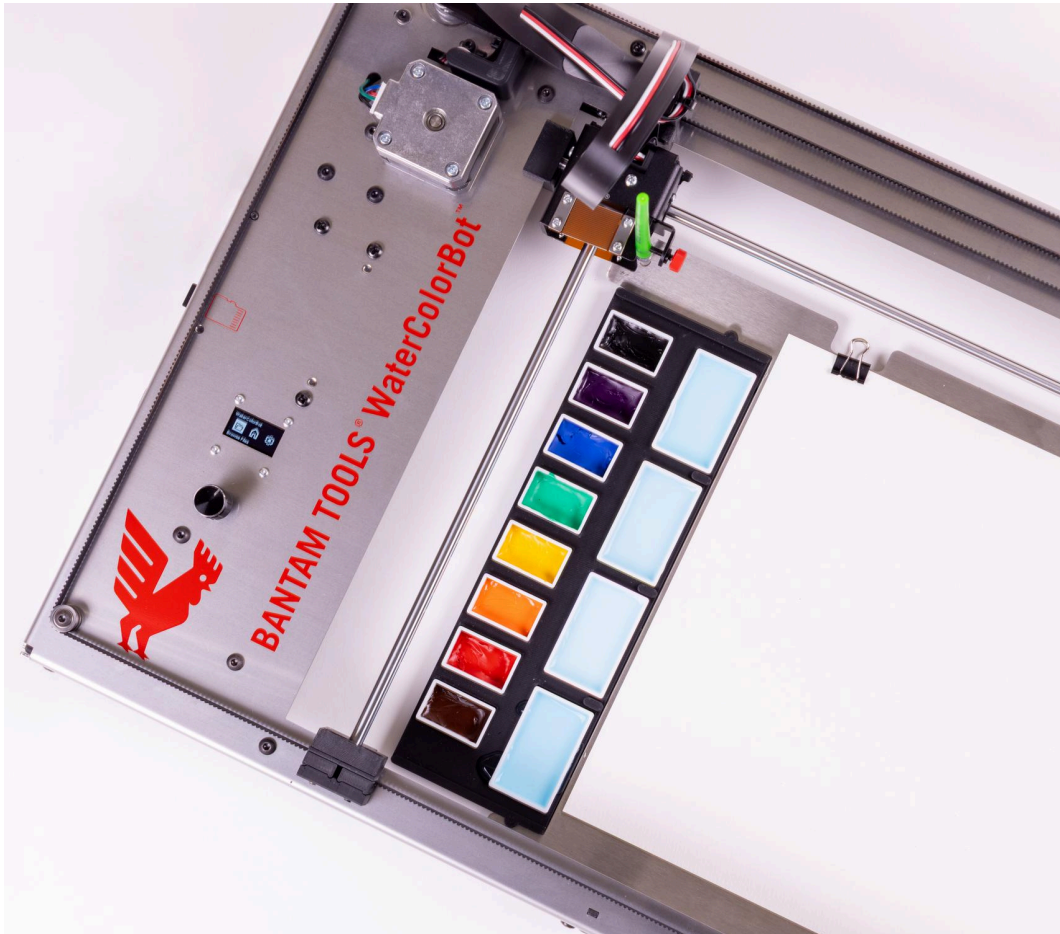


Bantam Tools WaterColorBot™ Using the 12 Pan Water Color Palette

Available separately is our 12-Pan Water Color Palette Accessory.



Although painting with the Crayola set is fun and far more capable than you might expect, there will come a point when you want to explore fine art quality water colors. This palette can also be used to experiment with gouache, tempura, acrylics, or oils.

This guide also serves as a tutorial for creating your own toolsets for painting with Bantam Tools Studio.

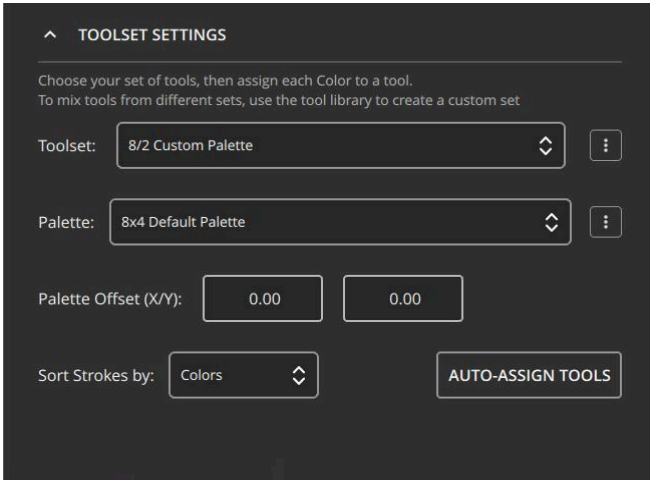
We have created a preset toolset called **12 Pan Custom**

There are two primary uses for this Toolset:

1. **Quick Paint Loading** - provides a quick way to set up a one time order of paints.
2. **Custom User Toolset** - can be duplicated and developed into a custom Toolset that you can recall later.

1 - Quick Paint Loading -

The first way to use this palette is by matching your paint pans to the colors in a particular file. Start on the Prepare tab, open an SVG file, then set your paper and artwork settings as needed.

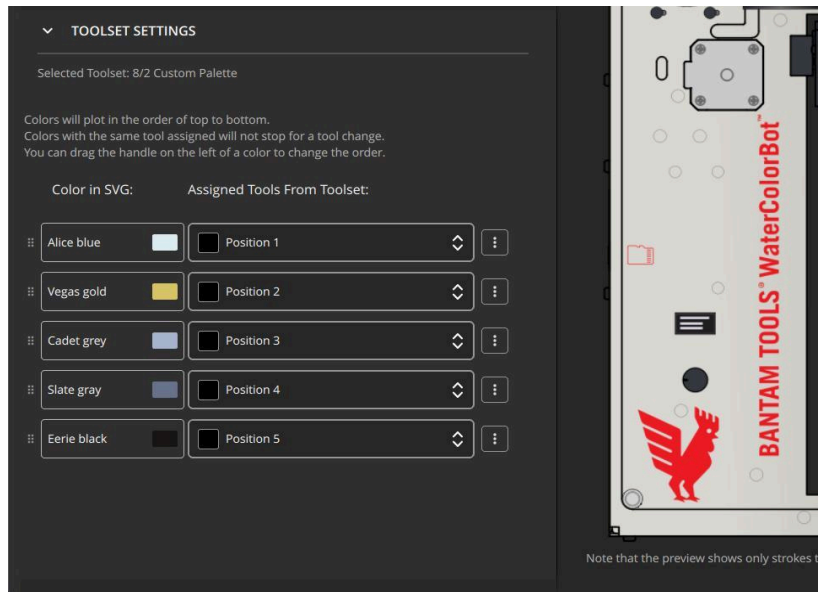


1.1 - Selecting the Palette in Toolset Settings

Select the Toolset called **12-Pan Custom Palette** from Toolset Settings

1.2 - Assign Colors to Positions Manually

You will notice that this toolset does not work with Auto Assign. It only consists of positions. Manually select the position where each color will be placed. Bantam Tools Studio will attempt to order these from light to dark, as to avoid contaminating light colors with darker pigments, but you're free to rearrange these how ever you see fit.



1.3 - Arrange Your Physical Pans

It can be helpful to arrange your physical pans at the same time you prepare your file.

1.4 - Run Your Painting

and that's it, hit generate and save g-code. Move your file and palette over to the WaterColorBot and run your painting.

2. - Custom User Toolset -

You can also take any default user toolset, duplicate it, and shape it into your own custom toolset. The main reason to do this is that Auto-Assign Tools will function properly if each tool has the proper color assigned to it. In this example we will be working with the **12-Pan Custom** from the last example.

2.1 Open the Tool Library page and locate the **12-Pan Custom** under Preset Toolsets.

2.2 Click the three dots next to the top level of that toolset and select **Duplicate Toolset**.

2.3 Scroll to **User Toolsets**. You will find a **12-Pan Custom Copy** there.

2.4 Rename the duplicated toolset. Click the top level of the toolset to open its settings on the right side of the screen. At the top, edit **Toolset Name**, then click **Save Changes**.

2.5 Rename Individual Tools and Recolor

Now you can select individual tools inside this toolset, Rename and select a color for them, then click Save Changes.

2.6 Delete Unused Positions

Because we started from a preset toolset, in our example we aren't using positions 6-8. If you click on the three dots next to Position 6 you can delete this tool. Do the same with the other unused tools.

